

---

# WFM/WVR 7200/8200/8300

## Power Supply Replacement Instructions

### Installation safety summary

The *Installation safety summary* section contains additional information required to safely perform installation on the product. Read this *Installation safety summary* before performing any installation procedures.

**Do not perform installation alone.** Do not perform installation or adjustments of this product unless another person capable of rendering first aid and resuscitation is present.

**Disconnect power.** To avoid electric shock, switch off the product power and disconnect the power cord from the mains power before removing any covers or panels, or opening the case for servicing.

**Installation questions.** If you have any questions about the installation procedure described in this document, please contact Telestream Support.

### Terms in this manual

These terms appear in this manual:



---

**WARNING.** Warning statements identify conditions or practices that could result in injury or loss of life.

---

---

**CAUTION.** Caution statements identify conditions or practices that could result in damage to this product or other property.

---

---

**NOTE.** Note statements are for conveying additional information about a topic. In general, there are no safety or product related issues with a Note statement.

---

### Telestream support

To obtain technical support contact us using our website, email, or phone number listed.

**Website:** [www.telestream.net/telestream-support](http://www.telestream.net/telestream-support)

**Email:** [videosupport@telestream.net](mailto:videosupport@telestream.net)

**US and Canada Toll-free:** 1-844-219-5329

**Outside of US and Canada:** 1-503-967-9833

## Kit parts list

The following table lists the parts that are supplied with the front panel assembly installation kit unless otherwise noted.

Quantity	Part Number	Description
1	P00010704	Power Supply, 200W, AC-DC, 90-264 VAC In, 5V 16.67 Out
1	P00010573	Cable, Power Supply, Load Control, WFM/WVR/7200/8200/8300
1	P00010671	Cable, Power Supply, Load, WFM/WVR/7200/8200/8300
1	P00010888	Manual, WFM/WVR/7200/8200/8300 Power Supply Install Read This First
1	P00010811	Manual, WFM/WVR/7200/8200/8300 Power Supply Install Instructions
Available at: <a href="https://www.telestream.net/video/resources.htm">https://www.telestream.net/video/resources.htm</a>		

## Recommended tool list

Name	Description
TORX screwdriver handle	Accepts TORX-driver bits
T-10 and T-15 TORX tips	Used for removing and installing instrument screws
Anti-static wrist strap	

## Replacing the Power Supply

For instructions on how to replace the power supply:

- See Page 3 for WFM 7200/8200/8300
- See Page 11 for WVR 7200/8200/8300

## Replace WFM 7200/8200/8300 Power Supply

**⚠ WARNING.** Dangerous voltages may be present. To prevent electrical shock, disconnect the power cord from the unit before starting the upgrade procedure. Failure to do so could cause serious injury or death.

**CAUTION.** Many components within the instrument are susceptible to static discharge damage. To prevent static discharge damage, service the product only in a static-free environment. Observe standard handling precautions for static-sensitive devices while installing this kit. Always wear a grounded wrist strap, grounded foot strap, and/or static resistant apparel while installing this kit.

1. Remove the AC power cable.

**⚠ WARNING.** Dangerous voltages may be present. To prevent electrical shock, disconnect the power cord from the unit before starting the upgrade procedure. Failure to do so could cause serious injury or death.

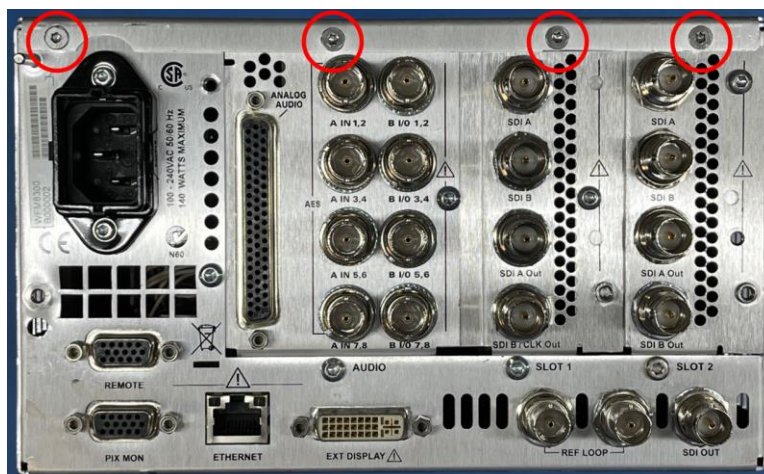
2. Place the instrument in a static controlled environment, and use a grounded wrist strap, grounded foot strap, and/or static resistant apparel while installing this kit.
3. Remove the outer shell (with handle) if currently installed. Remove the 2 screws ...



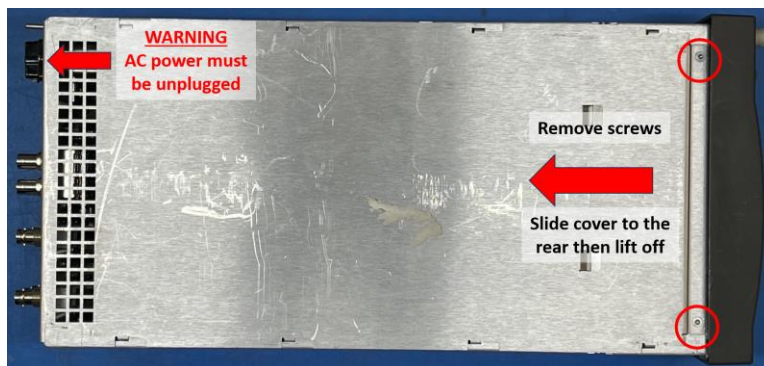
... and slide the shell off the back of the instrument.



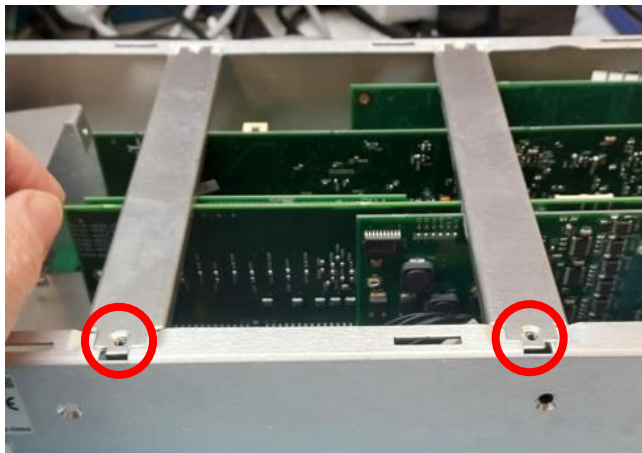
- 4. Remove the top cover from the instrument by removing the 4 screws in the back and 2 screws in the top.



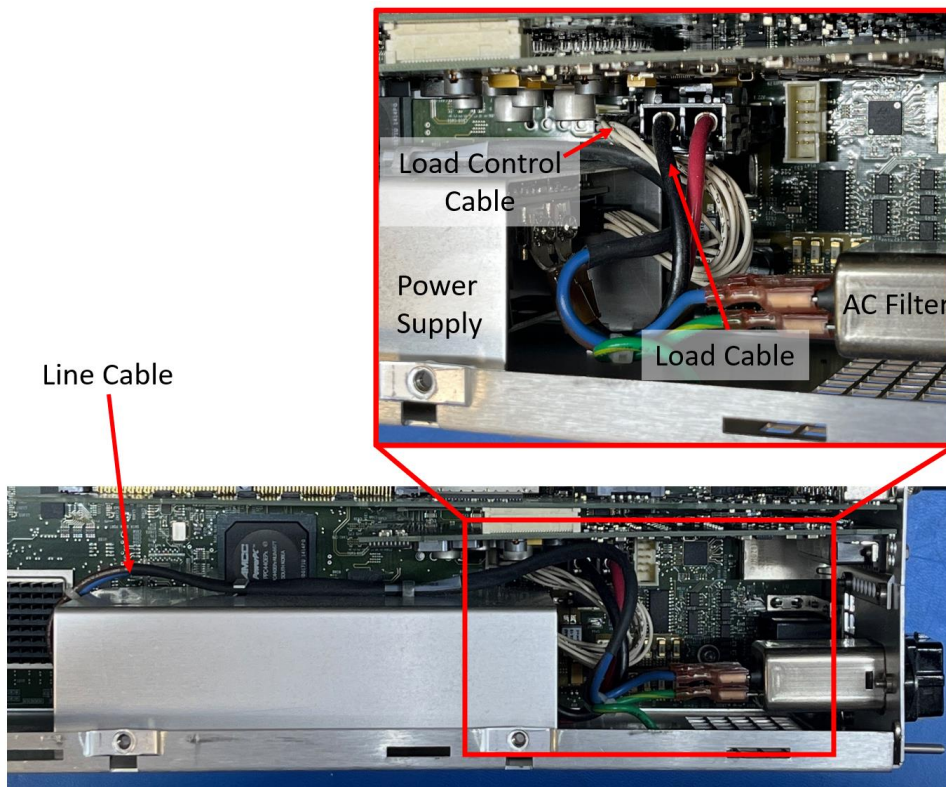
Slide the top cover to the rear of the instrument and lift off.



- 5. Remove the screws that secure the two cross braces and remove them.



- 6. Note the location of the Power Supply, AC Line Filter, Line cable, Load cable, and Load Control cable. After you change the components in your instrument, it is important to put them back in the same configuration. It is recommended to take photos of your instrument since there may be slight variations in the instrument configurations.



7. Remove the Line cable from the Power Supply.
8. Remove the Load cable from the instrument motherboard, not from the power supply.

The Load cable is latched to the connector on the motherboard. Press the latch and pull up on the cable to remove. If there is an Option board preventing you from easily accessing the latch, you can either remove the option board or use a tool (such as a needle-nose pliers) to reach in and press the latch.

Instructions for removing the Option board can be found in the following instruction manual at [telestream.net](http://telestream.net) or contact Telestream Support.

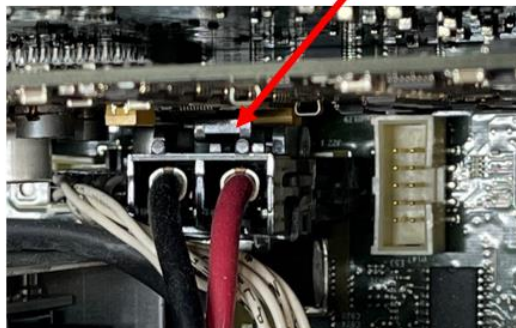
075-1001-04 WFM720UP, WFM820UP, and WFM830UP Upgrades for the WFM7200, WFM8200, and WFM8300 Waveform Monitors

---

**CAUTION.** *If you use a tool to unlatch the Load cable, use caution to not damage any components on the adjacent Option board.*

---

### Load Cable latch

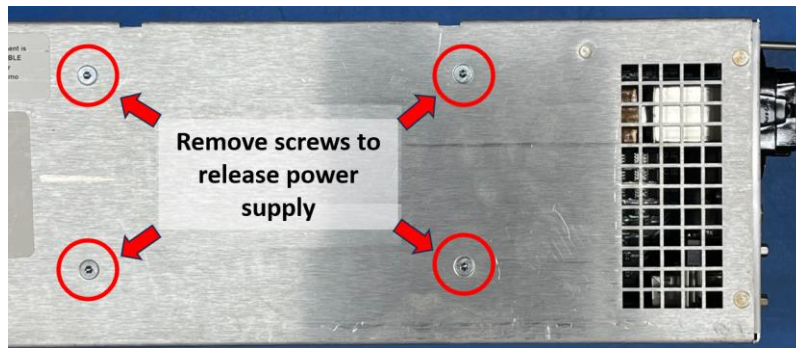


9. Remove the 4 screws that hold the power supply sled and carefully remove the sled/supply assembly.

---

**CAUTION.** *Hold the power supply sled while you remove the screws. The motherboard may be damaged if you remove the screws and the power supply sled drops onto the motherboard.*

---



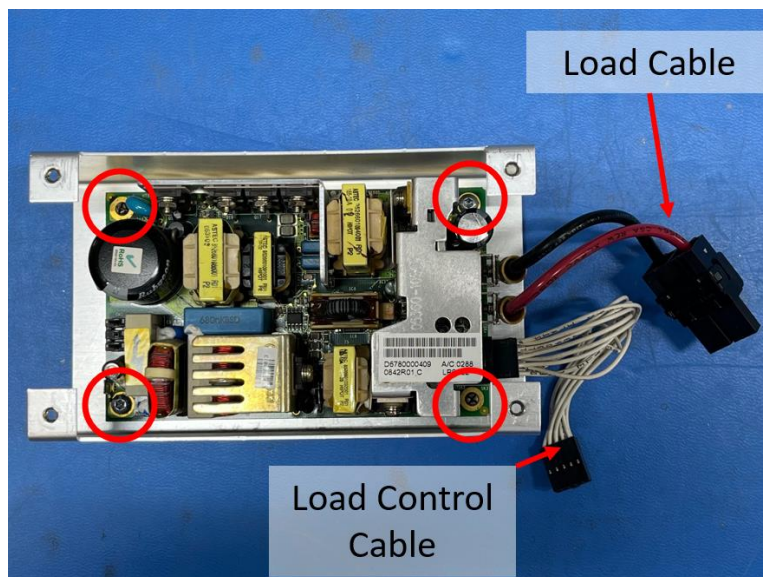
10. Remove the screws that hold the power supply to the sled (there may be 2 or 4 screws depending on your configuration). Remove the old power supply and attached cables from the instrument.

You will no longer need the old Power Supply and attached cables.

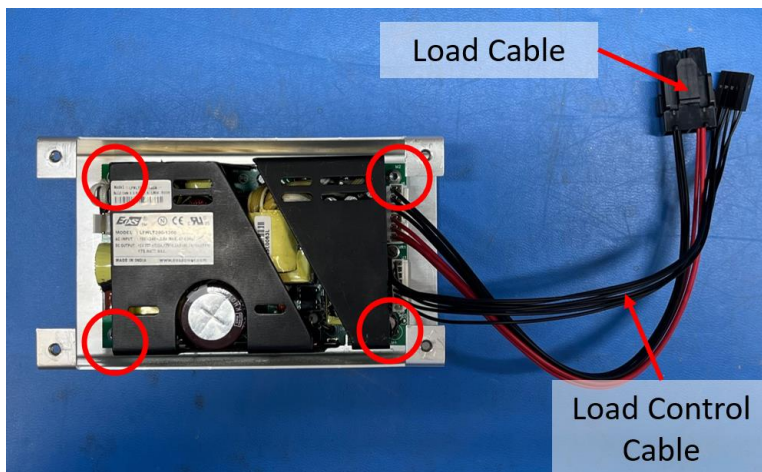
---

***NOTE:** Please dispose of this electronic assembly properly according to your local regulations.*

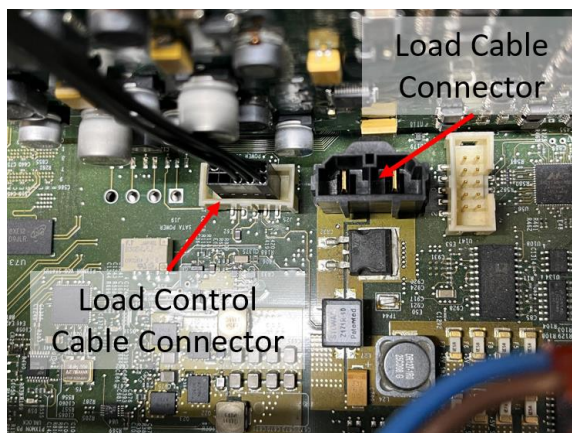
---



11. Install the new power supply from the kit onto the sled using the same screws. Attach the Load (P00010671) and Load Control (P00010573) cables from the kit to the Power Supply.



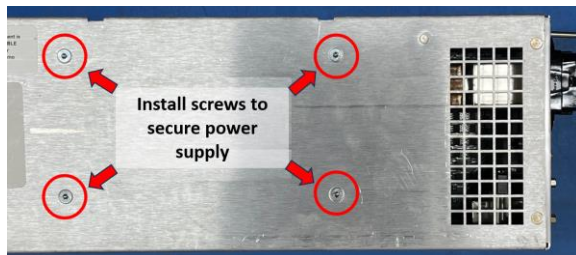
12. Install the Supply/Sled assembly back into the instrument. It is easiest to install in the following order:
  - a. Connect the Load Control cable to the motherboard.



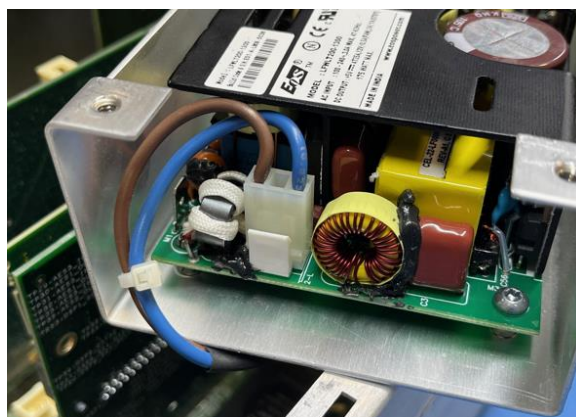
- b. Connect the Load cable to the motherboard.



- c. Secure the Supply/Sled assembly to the instrument using the same 4 screws from before.



- d. Connect the Line cable to the Power Supply. Secure the Line cable to the Sled if there are hold-downs features on the Sled.

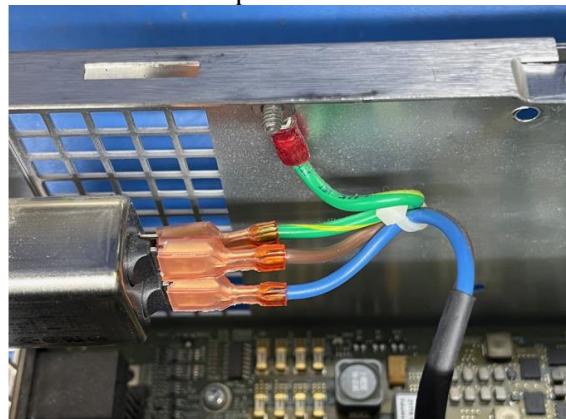


- 13. The Line connector on the new Power Supply is reversed, so the line (brown) and neutral (blue) wires at the AC Line Filter need to be reversed.

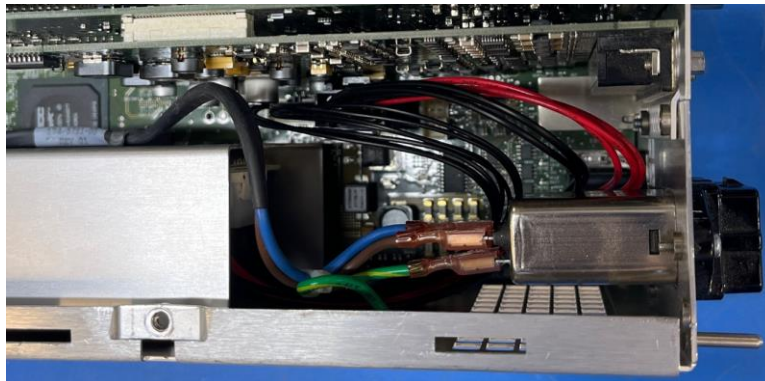
Before: Blue on top



After: Brown on top



14. After installing the new Power Supply, the instrument should look as follows:



15. Replace the cross braces (step 5) and the top cover (step 4) before connecting the AC cable and turning on the instrument.

---

***NOTE:** If the instrument does not power on or behaves in an unexpected manner, remove the AC power cord and contact Telestream Support.*

---

## Replace WVR 7200/8200/8300 Power Supply



**WARNING.** Dangerous voltages may be present. To prevent electrical shock, disconnect the power cord from the unit before starting the upgrade procedure. Failure to do so could cause serious injury or death.

---

**CAUTION.** Many components within the instrument are susceptible to static-static discharge damage. To prevent static discharge damage, service the product only in a static-free environment. Observe standard handling precautions for static-sensitive devices while installing this kit. Always wear a grounded wrist strap, grounded foot strap, and/or static resistant apparel while installing this kit.

---

1. Remove the AC power cable.



**WARNING.** Dangerous voltages may be present. To prevent electrical shock, disconnect the power cord from the unit before starting the upgrade procedure. Failure to do so could cause serious injury or death.

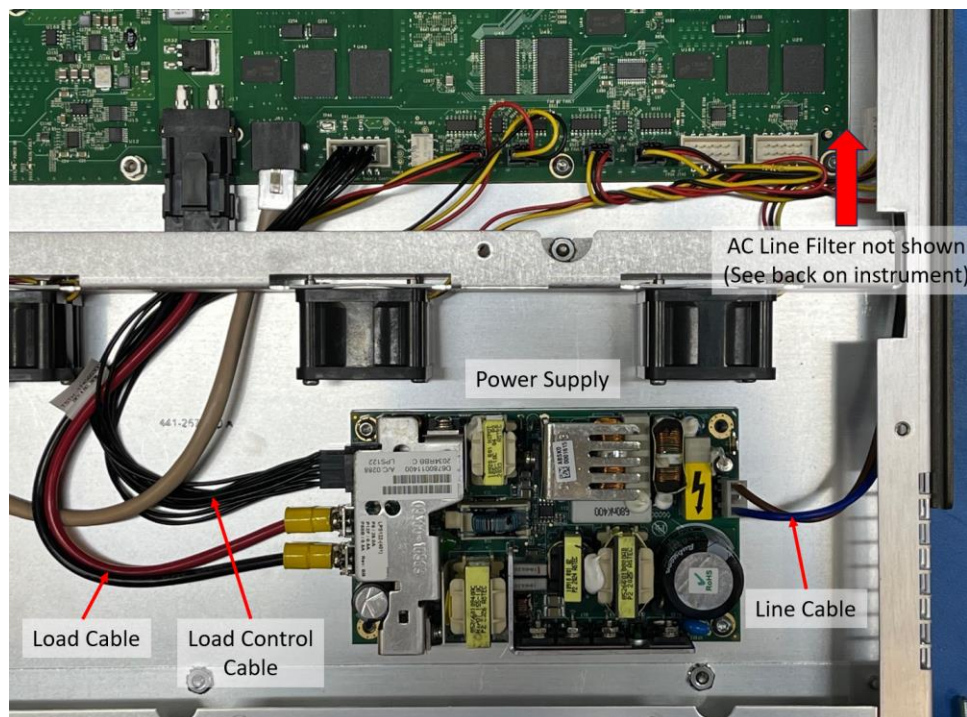
---

2. Place the instrument in a static controlled environment, and use a grounded wrist strap, grounded foot strap, and/or static resistant apparel while installing this kit.
3. Remove the 18 screws that hold the top cover on the instrument. Remove the top cover and set the screws aside.



4. Note the location of the Power Supply, AC Line Filter, Line cable, Load cable, and Load Control cable. After you change the components in your instrument, it is important to put them back in the same configuration.

It is recommended to take photos of your instrument since there may be slight variations in the instrument configurations.



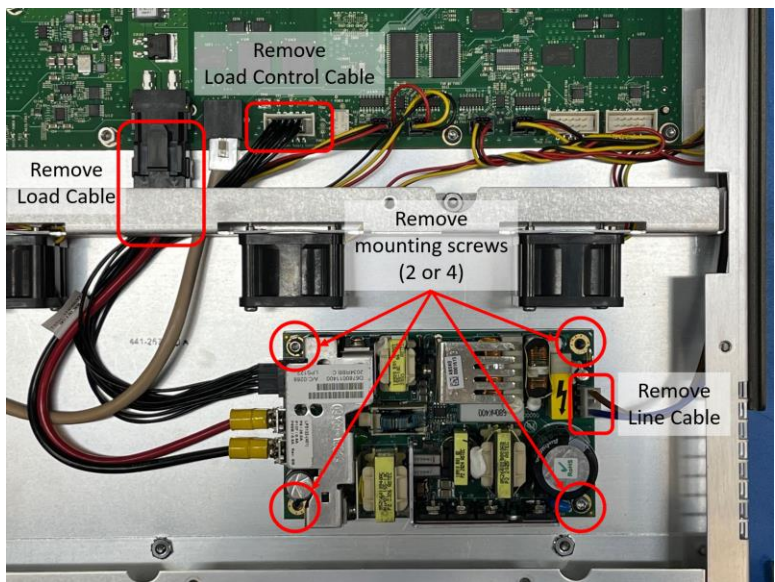
5. Remove the Line cable from the Power Supply.
6. Remove the Load cable from the instrument motherboard, not from the power supply. The Load cable is latched to the connector on the motherboard. Press the latch and pull on the cable to remove.
7. There are 2 or 4 screws that hold the Power Supply to the chassis depending on your instrument. Remove the screws and remove the Power Supply and attached cables.

You will no longer need the old Power Supply and attached cables.

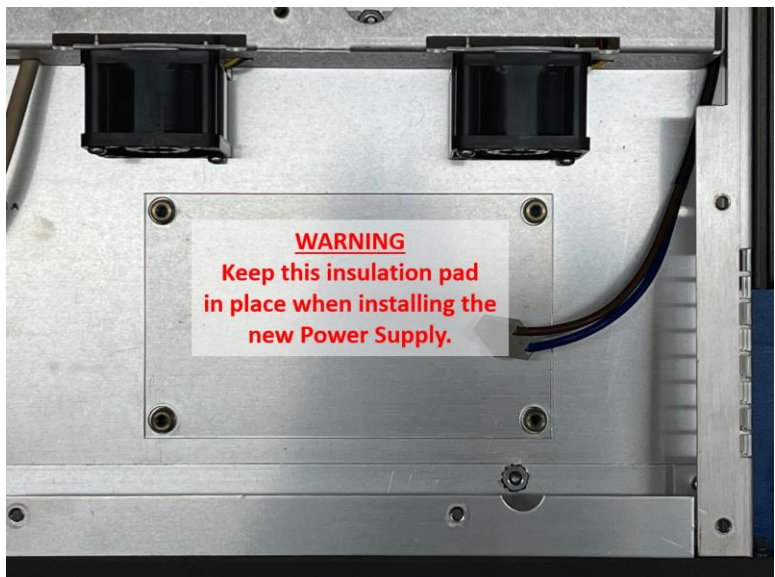
---

**NOTE:** Please dispose of this electronic assembly properly according to your local regulations.

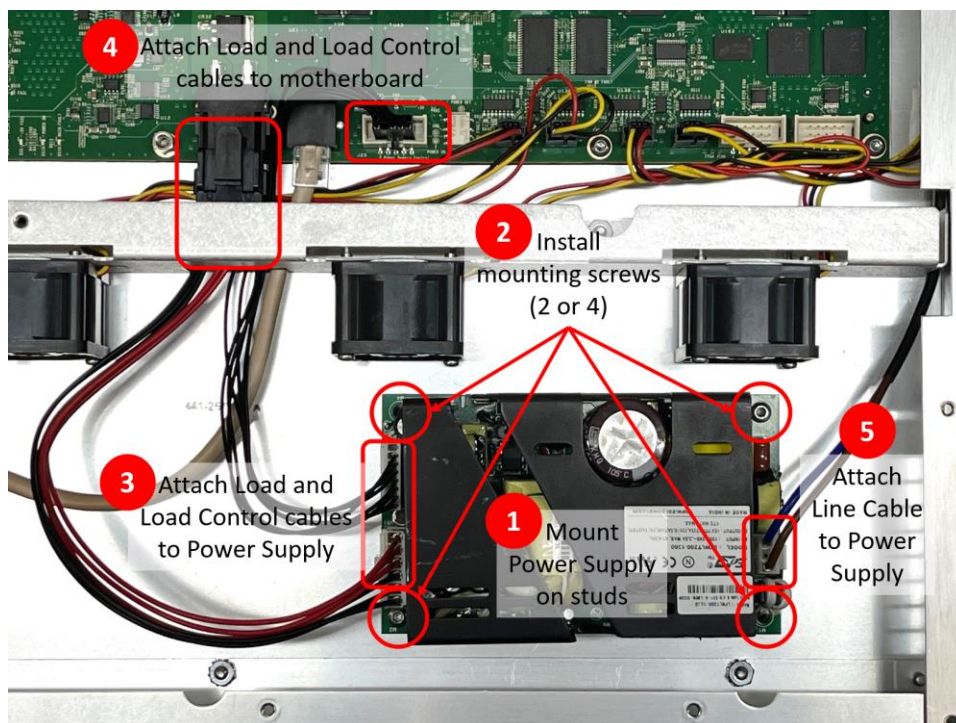
---



**WARNING.** Do not remove the plastic insulation sheet under the Power Supply. This is needed to ensure that the Power Supply remains electrically isolated from the chassis.

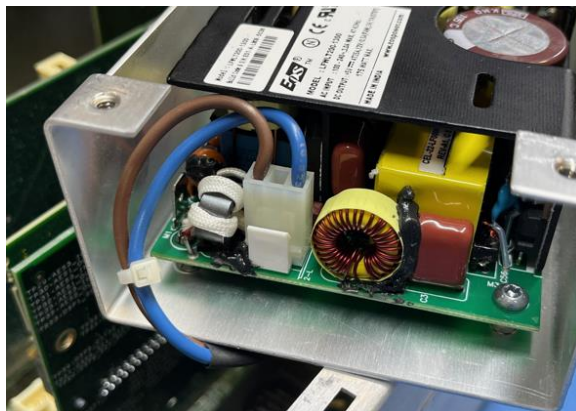


8. Install the Power Supply and cables in the instrument. It is easiest to install in the following order:



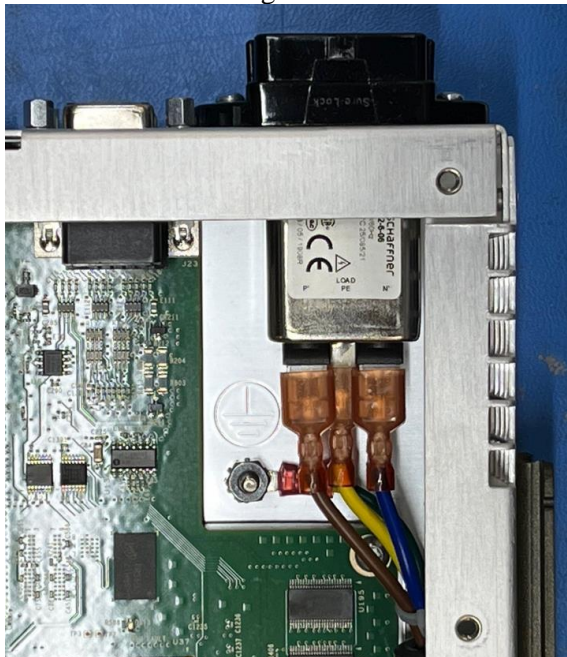
- a. Mount the Power Supply on the chassis studs.
- b. Install mounting screws to secure the Power Supply to the chassis. There will be 2 or 4 mounting screws depending on your instrument.
- c. Attach the Load (P00010671) and Load Control (P00010573) cables from the kit to the Power Supply.
- d. Attach Load and Load Control cables to the motherboard.

- e. Attach Line cable to the Power Supply. Note that the Line cable attaches to the Power Supply according to the following photo:

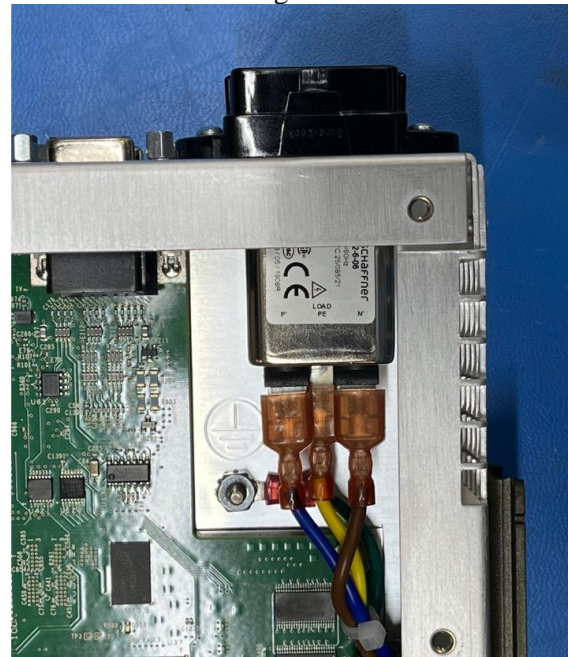


- 9. The Line connector on the new Power Supply is reversed, so the line (brown) and neutral (blue) wires at the AC Line Filter need to be reversed.

Before: Blue on the right



After: Brown on the right



- 10. Replace the top cover (step 3) before connecting the AC cable and turning on the instrument.

***NOTE: If the instrument does not power on or behaves in an unexpected manner, remove the AC power cord and contact Telestream Support.***